

Better  
Homes  
and Gardens®

SPECIAL INTEREST PUBLICATIONS.

# BEAUTIFUL KITCHENS™

The New  
Elegance  
23 Fabulous  
Kitchens

2004  
Display until August 3

\$7.99 U.S.



www.bhg.com

At Home with  
Top Designers  
Living with Color  
Culinary Tools  
on Display





A cast-stone panel in seawater hues behind the cooktop, *this photo*, adds an artful touch to the kitchen of the 2003 San Francisco Decorator Showcase House. The simple-style cabinetry displays a beaded trim inside recessed panels and a bottom molding that suggests legs of period furniture pieces. An acid-washed copper farmhouse sink, *opposite*, mated with a coppery-hue mahogany cabinet creates an elegant monochromatic pairing. Antique hardware replated with nickel adds a period stamp.





# Seaside Artistry

Enticing views of a sun-warmed beach where sparkling waves wash up on the shore inspired the palette and patina of a coastal cottage.



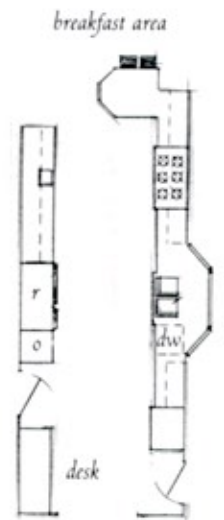
**S**et atop the cliffs and beaches of the Golden Gate Strait, the 2003 San Francisco Decorator Showcase House offers more than the average water view. From its summit, the home overlooks a panoramic vista of the shimmering Pacific and the burnt-orange span of the Golden Gate Bridge. San Francisco designer Kathleen Navarra poured the site's oceanic inspiration into a beachy and beautiful kitchen for the 1920s home with a French Renaissance facade.

The original kitchen underscored the period's upstairs-downstairs hierarchy, when wealthy owners never ventured beyond the dining room and into the kitchen. "[The kitchen] was dank and narrow," Navarra says. Plus, with no opening from the kitchen to the waterside living room, the space ignored the incredible view beyond. "I thought to myself, *How am I going to breathe life into this one?*" Navarra says.

She found the answer by taking cues from the ocean. Blues of the sky and sea flowed into the clear watery hues of the wall tiles and the pale gray-blue glazed cabinets. The warm beiges of the sand found their way into the glaze-painted walls and the distinctive sun-bleached tones of the honed and planked limestone

**To downplay** the bowling-alley length of this airy kitchen *left*, the pantry door features a dramatic iron sculpture of seaweed that seems to float on water. The painted-glass backdrop complements the color of the kitchen's tile walls.

**In the kitchen's** home office area *opposite*, the choice of a subway-tile wall reflects the home's period, when kitchens contained tile floor to ceiling. The highly reflective surface and ice-blue color express both a contemporary twist and a watery reference.







EVAN'S PIANO RECITAL  
WED @ 7:30

DALE'S SOCCER GAME  
SAT @ NOON

---

\* SHOPPING \*  
LIST

MILK  
EGGS  
- TWINKIES  
- DIET COKE  
- WINDEX









Capturing the breezy ease of a day at the beach for the kitchen floor, designer Kathleen Navarra artfully laid a boardwalk of limestone cut into plank-size strips and edged with tiny tumbled mosaic tiles that mimic sand.

A new arched doorway with pocket doors divides the breakfast area opposite from the dining room. Inspired by nature, the cast-stone tabletop takes the form and texture of a gigantic log slice balanced atop an iron tree-trunk-shape base. Easy-care imitation suede covers the upholstered benches. The linen drapery with an overscale floral pattern feels as playful as an aloha shirt. A Victorian-style table, right, in the kitchen's center takes a contemporary spin as a movable work island with new paint, a butcher-block top, and a set of industrial-strength casters.



floor. The orangey acid-washed copper sink and range hood reflect the color of a sunset. The luminous cloudlike light fixtures also evoke views of the sky.

What had originally been three separate rooms made way for a new open plan without adding space to the home's footprint. The designer knocked down walls and added a small stand-alone pantry plus a breakfast room at the front of the house separated from the kitchen by a marble-top peninsula. Navarra then launched an arresting design concept to enhance the kitchen's potential.

"Visually, I wanted to stop you," she says. The tall pantry cabinet first catches the eye with its forged-iron seaweed sculpture overlayed on a painted glass door. The next beautiful distraction, a stunning natural mahogany sink cabinet, holds a perfectly color-matched, patinated-copper farmhouse sink. A similarly aged copper hood covers the cooktop beyond. Alternating dark and light cabinetry, some recessed and some jutting out, breaks up the sight lines.

Filled with an ethereal quality, the bright, cozy space also happens to work brilliantly as a kitchen. **BK**

RESOURCES ON PAGE 130

Written by Carla Breer Howard / Photography by Grey Crawford